

CORONAVIRUS

Mandated Bacillus Calmette-Guérin (BCG) vaccination predicts flattened curves for the spread of COVID-19

Martha K. Berg*, Qinggang Yu, Cristina E. Salvador, Irene Melani, Shinobu Kitayama*

Bacillus Calmette-Guérin (BCG) vaccination may reduce the risk of a range of infectious diseases, and if so, it could protect against coronavirus disease 2019 (COVID-19). Here, we compared countries that mandated BCG vaccination until at least 2000 with countries that did not. To minimize any systematic effects of reporting biases, we analyzed the rate of the day-by-day increase in both confirmed cases (134 countries) and deaths (135 countries) in the first 30-day period of country-wise outbreaks. The 30-day window was adjusted to begin at the country-wise onset of the pandemic. Linear mixed models revealed a significant effect of mandated BCG policies on the growth rate of both cases and deaths after controlling for median age, gross domestic product per capita, population density, population size, net migration rate, and various cultural dimensions (e.g., individualism). Our analysis suggests that mandated BCG vaccination can be effective in the fight against COVID-19.

INTRODUCTION

The coronavirus disease 2019 (COVID-19) pandemic began in December 2019 in Wuhan, China. Since then, it has rapidly spread across the globe. Currently, there is no end in sight. The present work is motivated by prior evidence that *Bacillus Calmette-Guérin* (BCG) vaccination (typically given at birth and/or during childhood) offers a long-lasting protective effect not only against tuberculosis (the intended target of BCG) but also against various other infectious diseases (1–3). Recent suggestions abound that BCG could be an effective tool in fighting against COVID-19. However, existing cross-national analyses are hampered by methodological weaknesses. For the most part, no effort has been made to exclude potential effects of reporting biases. The potential benefit of universal BCG policies requires careful assessment. To address this gap, we focused on the rate of the increase in both confirmed cases and deaths during an early period of country-wise outbreaks and tested whether this rate might be slower in countries that mandated BCG vaccination until at least 2000, compared to those that did not.

The BCG vaccine is used against tuberculosis (4). One review has found that BCG vaccination reduces the risk of tuberculosis by 50% (5). A follow-up to an earlier BCG clinical trial performed on native Americans shows that BCG protects people from both tuberculosis and lung cancer for up to several decades, throughout each person's life (2, 3). A more recent meta-analysis of a broader range of observational studies and clinical trials (1) suggests that the effectiveness of BCG could extend to all-cause mortality. Several controlled trials provide consistent results showing that the reduced mortality is attributable to protection against respiratory infections as well as neonatal sepsis (6–8). Together, the available evidence suggests that BCG has beneficial effects on immunity against a range of lung-related infections that go beyond tuberculosis, which makes it a promising candidate for defending against COVID-19. As for mechanisms, recent experimental work (9) finds that BCG vaccination causes genome-wide epigenetic reprogramming of human monocytes, which, in turn, predicts protection against experimental viral infection.

Over the last century, many countries adopted universal policies of mandatory BCG vaccination to fight against tuberculosis, which was then a major threat. Since then, many countries maintained such a policy, at least until very recently (e.g., China, Ireland, Finland, and France). Some other countries terminated the policies as tuberculosis ceased to be a threat (e.g., Australia, Spain, and Ecuador). Of note, some countries never mandated BCG vaccination (e.g., United States, Italy, and Lebanon). Therefore, there is sufficient variability in the presence or absence of such policies, distributed across different regions of the world, to make it possible to draw systematic comparisons.

We examined the day-by-day increase of both confirmed cases and deaths and compared the rate of increase between countries that had mandated BCG policies until at least 2000 and those that did not. The start of the growth curves was set to be equal across countries, thereby controlling for the varying onset of the pandemic in different countries. Specifically, we focused on a time period either after the first 100 confirmed cases [as in (10)] or after one confirmed COVID-19-caused death. We then tested the initial, exponential spread of the virus. To exclude any systematic influences of cross-national variation in reporting biases, we focused on the rate of increase of both cases and deaths. These rates are uncontaminated by reporting biases as long as the biases are stable during the period tested. Thus, to avoid any systematic variations in reporting biases, it is important to examine a short initial period of growth. At the same time, it is necessary to test a sufficiently long period to obtain reliable estimates of the growth rate. To simultaneously meet these two competing demands, we chose to examine the first 30 days of the onset of country-wise outbreaks in the main analysis, which was followed by a robustness check testing an even shorter 15-day period. In addition, in a subsequent analysis, we adopted a measure of country-wise reporting biases and weighted the data accordingly. Further, we also controlled for test availability.

We first tested whether the growth rate would be significantly slower in countries that have continued to mandate BCG vaccination until at least the year 2000, as compared to countries that do not currently require it. This year (2000) was chosen since vaccination may become effective at the population level only when a vast majority [70 to 80%, according to a simulation reported in (11)], with the assumption that the reproductive number (R_0) for COVID-19

Copyright © 2020
The Authors, some
rights reserved;
exclusive licensee
American Association
for the Advancement
of Science. No claim to
original U.S. Government
Works. Distributed
under a Creative
Commons Attribution
NonCommercial
License 4.0 (CC BY-NC).

University of Michigan, Ann Arbor, MI 48109, USA.

*Corresponding author. Email: bergmk@umich.edu (M.B.); kitayama@umich.edu (S.K.)

is greater than 3 (12)] is made resistant against a target virus, a phenomenon known as “herd immunity” (13). In the countries that had mandated BCG at birth until at least the year 2000, a vast majority of adults must have been made resistant against lung-related viral infections. We also explored whether there might be any difference between those that never had such a policy and those that had one during the 20th century but terminated the policy at least two decades ago. As an additional robustness check, we tested whether the groups of countries that vary in BCG policy status might also vary on various cultural dimensions, such as individualism versus collectivism (14).

RESULTS

Confirmed cases

All countries that had reported at least 15 days of at least 100 total confirmed cases and that had available data on BCG policy and covariates (median age, gross domestic product per capita, population density, population size, and net migration rate) were included (134 countries in total). For each country, day 1 was set to be the first day of at least 100 confirmed cases. See column 2 of table S1 for the date of day 1 for each included country.

To model the exponential growth of confirmed cases, we estimated a linear mixed model of the natural log-transformed number of confirmed cases. We entered two contrasts designating BCG policy status [current versus (past and none) combined and past versus

none]. The effect of BCG policy status on growth rate is reflected by the interactions between day and each BCG policy status contrast.

As shown in Table 1A, we found a significant main effect of day, $b = 0.114$, $P < 0.001$, reflecting an exponential increase in cases over time. This increase was qualified by a significant interaction between day and BCG policy status. Specifically, the growth rate of COVID-19 cases was significantly slower in countries with mandated BCG vaccinations until at least 2000, compared to countries without mandated BCG vaccinations through 2000, $b = -0.039$, $P < 0.001$ (see Fig. 1, A and B). Figure 2A shows the distribution of the country-wise regression coefficients.

Countries that once had such policies but terminated them before 2000 were not significantly different in growth rate from those that never instituted mandatory BCG vaccinations, $b = -0.009$, $P = 0.610$. In terms of control variables, larger population size predicted a faster growth rate of confirmed cases. See table S2 for a correlation table of all predictor variables.

The effect of BCG policy status on COVID-19 cases remained unchanged when countries were weighted by reporting quality (Supplementary analysis 1) and when controlling for the total number of tests (Supplementary analysis 2). Hence, biases in testing and reporting, demonstrably pervasive across countries, had little or no effect on the effect of universal BCG policies on the growth rate. Moreover, this effect also did not change when a 15-day time window was used (Supplementary analysis 3), adding further evidence that the main analysis is unlikely to be due to any systematic variations

Downloaded from <http://advances.sciencemag.org/> on August 17, 2020

Table 1. Regression tables predicting growth in (A) cases and (B) deaths. Day is mean-centered, and BCG policy variables are both contrast-coded. Population is natural log-transformed, and all covariates are standardized. This analysis is based on 134 and 135 countries for cases and deaths, respectively. GDP, gross domestic product.

Predictor	A. Cases			B. Deaths		
	<i>b</i>	<i>t</i>	<i>P</i>	<i>b</i>	<i>t</i>	<i>P</i>
Intercept	6.793	42.165	<0.001	2.445	8.284	<0.001
Day	0.114	12.218	<0.001	0.139	9.236	<0.001
Median age	0.219	2.164	0.034	0.224	1.363	0.176
GDP per capita	0.163	1.586	0.115	0.145	0.930	0.354
Population density	-0.099	-1.715	0.089	-0.012	-0.135	0.893
Net migration rate	0.111	1.242	0.217	0.050	0.368	0.713
Population	0.518	8.533	<0.001	0.679	7.281	<0.001
BCG past versus never	0.136	0.415	0.679	-0.164	-0.322	0.748
BCG current versus not current	-0.633	-3.388	0.001	-0.993	-3.437	0.001
Day × median age	0.008	1.442	0.153	0.020	2.631	0.010
Day × GDP per capita	0.010	1.951	0.053	0.011	1.515	0.132
Day × population density	-0.001	-0.390	0.697	-0.003	-0.674	0.502
Day × net migration rate	0.005	1.051	0.295	0.003	0.492	0.623
Day × population	0.030	9.617	<0.001	0.037	8.860	<0.001
Day × BCG past versus never	-0.009	-0.511	0.610	-0.007	-0.291	0.772
Day × BCG current versus not current	-0.039	-3.978	<0.001	-0.059	-4.530	<0.001

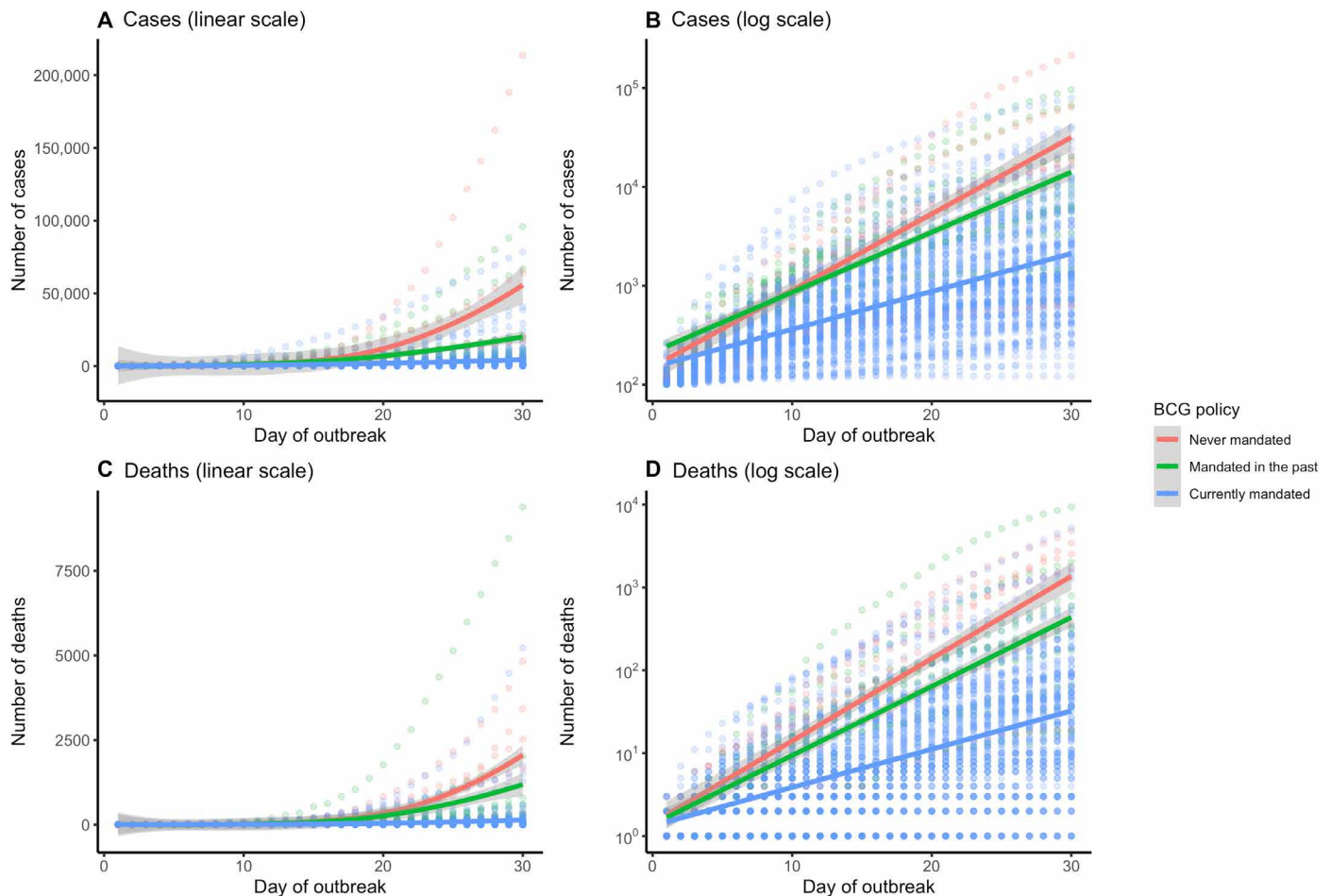


Fig. 1. Growth curves for COVID-19 cases and deaths by country BCG policy. (A and B) cases and (C and D) deaths, presented on linear (A and C) and logarithmic (B and D) scales.

in reporting biases during the 30-day period. In addition, the BCG effect had little to do with the cultural dimensions of individualism versus collectivism or power distance (Supplementary analysis 4).

Deaths

All countries that had reported at least 15 days of at least one death from COVID-19 and that had available data on BCG policy and covariates (135 countries in total) were included in this analysis. For each country, day 1 was set to be the first day of at least one confirmed death. See column 3 of table S1 for the date of day 1 for each included country.

We estimated a linear mixed model of the natural log-transformed number of deaths, controlling for the same control variables as above. As in the analysis on confirmed cases, we found a significant main effect of day, $b = 0.139$, $P < 0.001$, reflecting an exponential increase in deaths over time (Table 1B). This increase was qualified by a significant interaction between day and BCG policy status. Specifically, the growth rate of COVID-19–related deaths was significantly lower in countries with mandated BCG vaccinations until at least 2000, compared to countries without mandated BCG vaccinations through 2000, $b = -0.059$, $P < 0.001$ (Fig. 1, C and D). Figure 2B shows the distribution of the country-wise regression coefficients.

Countries that once had such policies but terminated them before 2000 were no different in growth rate from those that never

instituted mandatory BCG, $b = -0.007$, $P = 0.772$. In terms of control variables, larger population size and higher median age predicted a faster growth rate of COVID-19 deaths.

The effect of BCG policy status on COVID-19–related deaths remained unchanged when a 15-day time window was used (Supplementary analysis 3), showing the robustness of the main analysis. In addition, the BCG effect was unrelated to the cultural dimensions mentioned above (Supplementary analysis 4).

DISCUSSION

Our analysis shows that mandatory BCG vaccination is associated with a flattening of the curve in the spread of COVID-19. The effect we demonstrate is quite substantial. For example, our model estimates that the total number of COVID-19–related deaths in the United States as of 29 March 2020 would have been 468—19% of the actual figure (2467)—if the United States had instituted the mandatory BCG vaccination several decades earlier (see Supplementary analysis 5).

Our study is not the first to test the hypothesis that the country-wise spread of COVID-19 might depend on each country's BCG policy status. However, existing analyses are hampered by their focus on the cumulative totals of confirmed cases and deaths (15–29). These

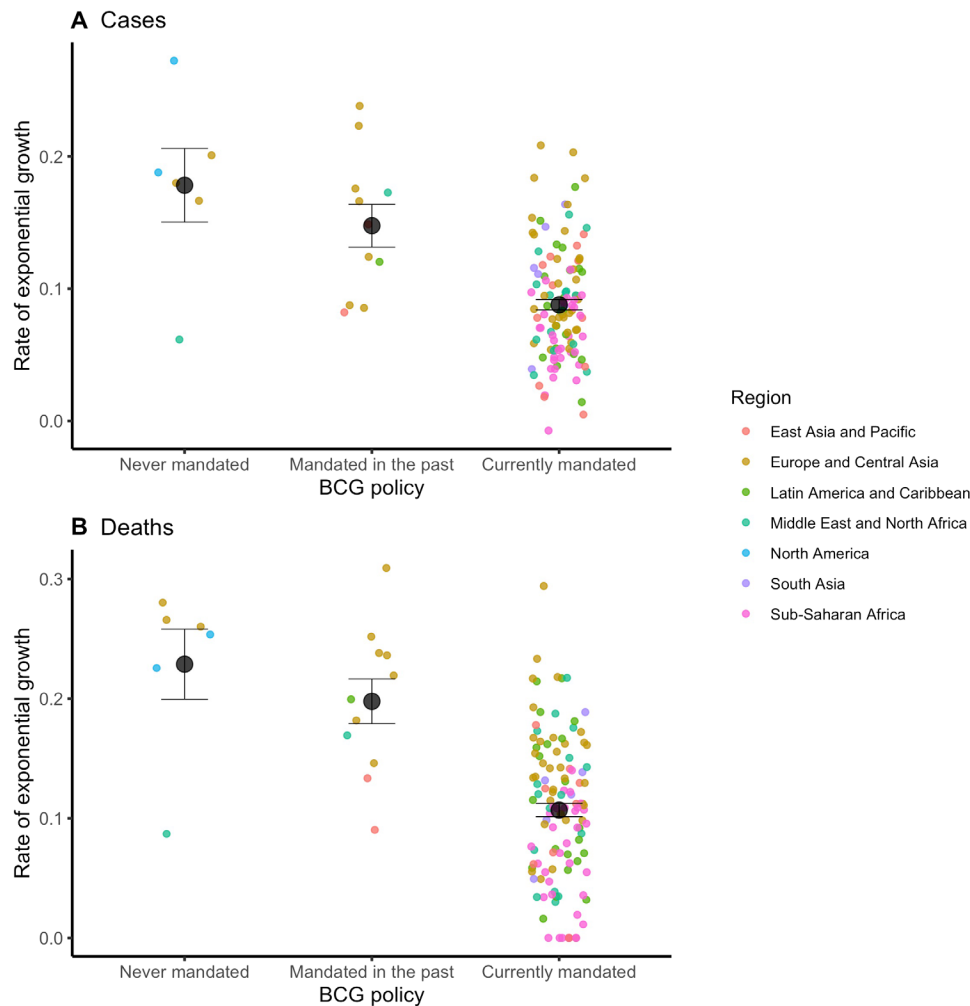


Fig. 2. Growth curves for COVID-19 cases and deaths by country BCG policy. Growth rate is adjusted by median age, GDP per capita, population density, total population (log-transformed), and net migration rate. Means and standard error are plotted for each group.

tallies depend on how early or late the onset of the pandemic was in each country. Moreover, they are massively influenced by reporting biases (including the availability of diagnostic testing), which can be both sizable and variable across countries. The same reservation applies to fatality rate (total deaths/total cases) (18, 26, 28–32) since the reporting biases are likely to be higher for confirmed cases than for deaths. We circumvented these problems in three ways. First, we focused on the rate of growth of both cases and deaths, which should be uninfluenced by reporting biases as long as these biases are stable during the period of study. To meet this requirement, we focused on a short period (either the first 30 days or 15 days). Second, we used the best available estimate of country-wise reporting biases as a weight in our analysis. Third, we controlled for testing availability.

Notably, the growth curves were as steep in countries that mandated BCG policies only during the 20th century (i.e., those that terminated the policies before 2000) as in those that never mandated the vaccine. BCG vaccination may become effective only when a substantial proportion of the population is made resistant to a virus. That is to say, the spread of the virus may be slowed only when there is herd im-

munity that prevents the virus from spreading easily across the population [see a simulation in (11)]. Note that as long as others receive vaccination, any single individual will be protected without vaccination, leading to a temptation for free-riding (i.e., not getting vaccinated). Hence, in the absence of state-imposed mandatory vaccination, cultural norms emphasizing prosocial interdependent orientations (33, 34) may prove to be crucial for the success of BCG in preventing future outbreaks of COVID-19 (11, 35). While the current analysis provided no evidence, this possibility must be addressed in future work.

Some limitations of our effort must be acknowledged. In all national policies, BCG is given early in life, typically at birth. It remains unclear whether BCG vaccination might be effective when given to adults, nor is it known how long BCG vaccination might provide immunity to COVID-19, although it is effective against tuberculosis and lung cancer for several decades (2, 3). Moreover, it is uncertain whether BCG might have any adverse effects when given to those already infected with COVID-19. There is an urgent need for randomized clinical trials. Last, the rates of exponential growth showed substantial variability across countries that have mandated BCG vaccination (Fig. 2, A and B). Hence, BCG is by no means a

magic bullet that assures safety against COVID-19. In all likelihood, there are some societal variables that moderate this effect. This variation must be addressed in future work. All these limitations notwithstanding, the current evidence is the first to conclusively show a significant advantage of universal BCG policies in reducing the spread of COVID-19, thereby justifying a thorough investigation of the merit of the mandatory BCG vaccination in the fight against COVID-19.

METHODS

Data

Main variables

We retrieved data on daily confirmed COVID-19 cases and deaths by country from a public repository updated daily by the Johns Hopkins University Center for Systems Science and Engineering (<https://github.com/CSSEGISandData/COVID-19>). Our current results are based on data through 10 June 2020. For confirmed cases, we included countries with at least 15 days of data, starting with at least 100 reported cases as day 1. For deaths, we included countries with at least 15 days of data, starting with at least one reported death as day 1.

BCG vaccination policy data for each country were compiled from the BCG World Atlas (www.bcgatlas.org/index.php) (36). Countries were excluded if policy information was unavailable. Data included BCG policy status (vaccination never mandated, vaccination mandated in the past but terminated before 2000, and vaccination mandated either currently or up until at least 2000). We defined this variable based on data from the year 2000, so that “vaccination currently mandated” refers to any country that continued to mandate the BCG vaccination into the 21st century. We created two contrast-coded variables to capture BCG policy. The first was a contrast between countries that currently mandate BCG (including those that maintained mandated BCG until at least 2000) and countries that do not currently mandate BCG (including those that terminated mandated BCG before 2000). The second was a contrast between countries that previously mandated BCG that terminated it before 2000 and countries that never mandated BCG. The 140 included countries are listed in table S1, which shows the date of the first 100 confirmed cases, the date of the first confirmed death, and the BCG policy status for each of the countries.

Demographics

Total population (in thousands) was included since the number of both confirmed cases and deaths should be larger for more populous countries. It was compiled from the United Nations Department of Economic and Social Affairs World Urbanization Prospects 2018 (37). Population was natural log-transformed to reduce skewness. Median age of the total population (in years) was included since older adults are more susceptible to viral threats. Population density (in persons per square kilometer) was used because it is likely to foster greater social contact, resulting in greater chances of infection. Net migration (persons entering country minus persons exiting country, per 1000 population) was included so as to control for population movement. These statistics were compiled from the United Nations Department of Economic and Social Affairs World Population Prospects 2019 (38). Gross domestic product (at purchasing power parity) per capita (GDP per capita), compiled from the World Bank International Comparison Program database (39), was included to control for economic development.

Underreporting of cases

Countries may vary in underreporting of COVID-19 cases due to governmental information suppression, a lack of tests, or both. As noted, this variable is likely relatively stable over the 30-day period under study, and therefore, it is unlikely to have systematic influences on the slope of the growth curves in the present analysis. Nevertheless, underreporting may decrease data quality and therefore may cause more subtle biases in the estimation of the slopes. To account for this effect, we ran a supplemental analysis in which we weighted each country based on the accuracy of their reporting.

We used an index of underreporting devised by Russell *et al.* (40), who first computed a case fatality ratio (CFR) for each country that is adjusted for the delay between admission to the hospital and death. They then computed a ratio comparing the best empirical estimate of CFR (1.4%) to each country’s adjusted CFR. Thus, if the ratio is smaller than 1, it indicates some degree of underreporting. Some countries, such as Italy, Spain, and Morocco, show substantial underreporting (index < 10%), whereas some others, such as Norway, Israel, and South Korea, show less underreporting (index > 50%). These country-wise underreporting scores are publicly available at https://github.com/thimotei/CFR_calculation. Since only daily estimates are available, rather than averages over time, we used estimates from 15 April 2020, which is included in the majority of countries’ 30-day period of data. Because of the lack of available data for some nations, the number of countries included in the analysis of cases dropped from 134 to 77. This analysis was performed only on the number of cases.

Number of tests

Countries may vary in the number of COVID-19 tests that are available, which may influence the number of cases that are reported. As noted, this variable is likely relatively stable over the 30-day period under study, and therefore, it is unlikely to have systematic influences on the slope of the growth curves in the present analysis. Nevertheless, to account for the possibility that our results are explained by differences in testing availability, we ran a supplemental analysis in which we controlled for the total number of tests in each country.

We used country-wise numbers of total COVID-19 tests (<https://github.com/owid/covid-19-data/tree/master/public/data/>) (10). Consistent with our underreporting analysis, we used estimates from 15 April 2020. Because of the lack of available data for some nations, the number of countries included in the analysis of cases dropped from 134 to 64. This analysis was performed only on the number of cases.

Cultural dimensions

Two cultural dimensions were tested as potential confounding variables. We included individualism versus collectivism (14) and power distance (41) since Western individualistic and/or more egalitarian societies tend to have no current mandated BCG policies. The culture scores for the two dimensions were obtained from Hofstede (41).

Statistical analysis

All analyses were conducted on up to 30 days of data from each eligible country. Linear mixed effect models with restricted maximum likelihood estimation were used to analyze both the number of cases and deaths. We first natural log-transformed both cases and deaths to account for the exponential nature of the increase of both (42). Each model estimated random intercepts and random slopes across days for each country, to allow for heterogeneity in growth curves among countries. We used a second random effect to account

for countries being nested in geographic regions, as defined by the World Bank (39). Since our maximal model did not converge, we dropped the slope-intercept covariance from all models. When this model failed to converge, we additionally dropped random intercepts from the model (Supplementary analysis 2). Day was centered so that main effects could be interpreted as differences at the mean day of the growth curve. Models included day, BCG status (two contrasts), and the interaction between day and BCG contrasts. All demographic variables were included (median age, population density, net migration, total population, and GDP per capita) along with their interactions with day. Total population was natural log-transformed to reduce skewness. All demographic and cultural variables were standardized. All data and codes are available on Open Science Framework (OSF) (https://osf.io/39mfj/?view_only=25e7c10a393b4fad9c131f13de8fc7f).

SUPPLEMENTARY MATERIALS

Supplementary material for this article is available at <http://advances.sciencemag.org/cgi/content/full/6/32/eabc1463/DC1>

REFERENCES AND NOTES

- J. P. T. Higgins, K. Soares-Weiser, J. A. López-López, A. Kakourou, K. Chaplin, H. Christensen, N. K. Martin, J. A. C. Sterne, A. L. Reingold, Association of BCG, DTP, and measles containing vaccines with childhood mortality: Systematic review. *BMJ* **355**, i5170 (2016).
- N. E. Aronson, M. Santosham, G. W. Comstock, R. S. Howard, L. H. Moulton, E. R. Rhoades, L. H. Harrison, Long-term efficacy of BCG vaccine in American Indians and Alaska Natives: A 60-year follow-up study. *JAMA* **291**, 2086–2091 (2004).
- N. T. Usher, S. Chang, R. S. Howard, A. Martinez, L. H. Harrison, M. Santosham, N. E. Aronson, Association of BCG vaccination in childhood with subsequent cancer diagnoses: A 60-year follow-up of a clinical trial. *JAMA Netw. Open* **2**, e1912014 (2019).
- World Health Organization, BCG vaccines: WHO position paper—February 2018. *Wkly. Epidemiol. Rec.* **93**, 73–96 (2018).
- G. A. Colditz, M. F. Brewer, C. S. Berkey, M. E. Wilson, E. Burdick, H. V. Fineberg, F. Mosteller, Efficacy of BCG vaccine in the prevention of tuberculosis: Meta-analysis of the published literature. *JAMA* **271**, 698–702 (1994).
- P. Aaby, A. Roth, H. Ravn, B. M. Napirna, A. Rodrigues, I. M. Lisse, L. Stensballe, B. R. Dinesen, K. R. Lausch, N. Lund, S. Biering-Sørensen, H. Whittle, C. S. Benn, Randomized trial of BCG vaccination at birth to low-birth-weight children: Beneficial nonspecific effects in the neonatal period? *J Infect Dis* **204**, 245–252 (2011).
- A. Roth, H. Jensen, M.-L. Garly, Q. Djana, C. L. Martins, M. Sodemann, A. Rodrigues, P. Aaby, Low birth weight infants and Calmette-Guérin Bacillus vaccination at birth: Community study from Guinea-Bissau. *Pediatr. Infect. Dis. J.* **23**, 544–550 (2004).
- S. Biering-Sørensen, P. Aaby, B. M. Napirna, A. Roth, H. Ravn, A. Rodrigues, H. Whittle, C. S. Benn, Small randomized trial among low-birth-weight children receiving Bacillus Calmette-Guérin vaccination at first health center contact. *Pediatr. Infect. Dis. J.* **31**, 306–308 (2012).
- R. J. W. Arts, S. J. C. F. M. Moorlag, B. Novakovic, Y. Li, S.-Y. Wang, M. Oosting, V. Kumar, R. J. Xavier, C. Wijmenga, L. A. B. Joosten, C. B. E. M. Reusken, C. S. Benn, P. Aaby, M. P. Koopmans, H. G. Stunnenberg, R. van Crevel, M. G. Netea, BCG vaccination protects against experimental viral infection in humans through the induction of cytokines associated with trained immunity. *Cell Host Microbe* **23**, 89–100.e5 (2018).
- M. Roser, H. Ritchie, E. Ortiz-Ospina, *Coronavirus Disease (COVID-19)—Statistics and Research* (Our World in Data, 2020); <https://ourworldindata.org/coronavirus>.
- C. Betsch, R. Böhm, L. Korn, C. Holtmann, On the benefits of explaining herd immunity in vaccine advocacy. *Nat. Hum. Behav.* **1**, 0056 (2017).
- S. Zhang, M. Diao, W. Yu, L. Pei, Z. Lin, D. Chen, Estimation of the reproductive number of novel coronavirus (COVID-19) and the probable outbreak size on the Diamond Princess cruise ship: A data-driven analysis. *Int. J. Infect. Dis.* **93**, 201–204 (2020).
- R. M. Anderson, R. M. May, Vaccination and herd immunity to infectious diseases. *Nature* **318**, 323–329 (1985).
- H. C. Triandis, *Individualism & Collectivism* (Westview Press, 1995).
- M. Asahara, The effect of BCG vaccination on COVID-19 examined by a statistical approach: No positive results from the Diamond Princess and cross-national differences previously reported by world-wide comparisons are flawed in several ways. medRxiv [Preprint]. 2020. <https://10.1101/2020.04.17.20068601> (2020).
- S. Dolgikh, Further evidence of a possible correlation between the severity of COVID-19 and BCG immunization. medRxiv [Preprint]. 2020. <https://10.1101/2020.04.07.20056994>.
- M. Fukui, K. Kawaguchi, H. Matsuura, Does TB vaccination reduce COVID-19 infection?: No evidence from a regression discontinuity analysis. medRxiv [Preprint]. 2020. <https://10.1101/2020.04.13.20064287>.
- R. P. Goswami, D. K. Mittal, R. P. Goswami, Interaction between malarial transmission and BCG vaccination with COVID-19 incidence in the world map: A changing landscape human immune system? medRxiv [Preprint]. 2020. <https://10.1101/2020.04.03.20052563>.
- C. M. Green, S. Fanucchi, E. T. Fok, S. J. C. F. M. Moorlag, J. Dominguez-Andres, Y. Negishi, L. A. B. Joosten, M. G. Netea, M. M. Mhlanga, COVID-19: A model correlating BCG vaccination to protection from mortality implicates trained immunity. medRxiv [Preprint]. 2020. <https://10.1101/2020.04.10.20060905>.
- P. K. Hegarty, A. M. Kamat, H. Zafirakis, A. Dinardo, BCG vaccination may be protective against COVID-19 (2020); https://www.researchgate.net/publication/340224580_BCG_vaccination_may_be_protective_against_Covid-19.
- J. Hensel, D. J. McGrail, K. M. McAndrews, D. Dowlatshahi, V. S. LeBleu, R. Kalluri, Exercising caution in correlating COVID-19 incidence and mortality rates with BCG vaccination policies due to variable rates of SARS CoV-2 testing. *Epidemiology* **10.1101/2020.04.08.20056051**, (2020).
- S. Kirov, Association between BCG policy is significantly confounded by age and is unlikely to alter infection or mortality rates. medRxiv [Preprint]. 2020. <https://10.1101/2020.04.06.20055616>.
- D. Klinger, I. Blass, N. Rappoport, M. Linial, Significantly improved COVID-19 outcomes in countries with higher BCG vaccination coverage: A multivariable analysis. medRxiv [Preprint]. 2020. <https://10.1101/2020.04.23.20077123>.
- A. Miller, M. J. Reandelar, K. Fasciglione, V. Roumenova, Y. Li, G. H. Otazu, Correlation between universal BCG vaccination policy and reduced morbidity and mortality for COVID-19: An epidemiological study. medRxiv [Preprint]. 2020. <https://10.1101/2020.03.24.20042937>.
- J. A. P. Mogica, V. Garduño, J. Torres, COVID-19 related mortality: Is the BCG vaccine truly effective? medRxiv [Preprint]. 2020. <https://10.1101/2020.05.01.20087411>.
- G. Sala, T. Miyakawa, Association of BCG vaccination policy with prevalence and mortality of COVID-19. medRxiv [Preprint]. 2020. <https://10.1101/2020.03.30.20048165>.
- A. Shet, D. Ray, N. Malavige, M. Santosham, N. Bar-Zeev, Differential COVID-19-attributable mortality and BCG vaccine use in countries. medRxiv [Preprint]. 2020. <https://10.1101/2020.04.01.20049478>.
- S. Shivendu, S. Chakraborty, A. Onuchowska, A. Srivastava, A. Patidar, Is there evidence that BCG vaccination has non-specific protective effects for COVID 19 infections or is it an illusion created by lack of testing? medRxiv [Preprint]. 2020. <https://10.1101/2020.04.18.20071142>.
- S. Singh, BCG vaccines may not reduce COVID-19 mortality rates. medRxiv [Preprint]. 2020. <https://10.1101/2020.04.11.20062232>.
- K. Bodova, V. Boza, B. Brejova, R. Kollar, K. Mikusova, T. Vinar, Time-adjusted analysis shows weak associations between BCG vaccination policy and COVID-19 disease progression. medRxiv [Preprint]. 2020. <https://10.1101/2020.05.01.20087809>.
- D. Dayal, S. Gupta, Connecting BCG vaccination and COVID-19: Additional data. medRxiv [Preprint]. 2020. <https://10.1101/2020.04.07.20053272>.
- R. Sziget, D. Kellermayer, R. Kellermayer, BCG protects against COVID-19? A word of caution. medRxiv [Preprint]. 2020. <https://10.1101/2020.04.09.20056903>.
- H. R. Markus, S. Kitayama, Culture and the self: Implications for cognition, emotion, and motivation. *Psychol. Rev.* **98**, 224–253 (1991).
- S. Kitayama, J. Park, Error-related brain activity reveals self-centric motivation: Culture matters. *J. Exp. Psychol. Gen.* **143**, 62–70 (2014).
- D. Brockmann, Public health: This message must be herd. *Nat. Hum. Behav.* **1**, 0065 (2017).
- A. Zwerling, M. A. Behr, A. Verma, T. F. Brewer, D. Menzies, M. Pai, The BCG World Atlas: A database of global BCG vaccination policies and practices. *PLOS Med.* **8**, e1001012 (2011).
- United Nations, Department of Economic and Social Affairs, Population Division, World Population Prospects: The 2019 Revision, custom data acquired via website. (2018).
- United Nations, Department of Economic and Social Affairs, Population Division, World Urbanization Prospects: The 2018 Revision, custom data acquired via website. (2018).
- The World Bank, International Comparison Program Database (2019).
- T. W. Russell, J. Hellewell, S. Abbott, N. Golding, H. Gibbs, C. I. Jarvis, K. van Zandvoort, CMMID nCov working group, S. Flasche, R. Eggo, W. J. Edmunds, A. J. Kucharski, Using a Delay-Adjusted Case Fatality Ratio to Estimate Under-Reporting (CMMID Repository, 2020); https://cmmid.github.io/topics/covid19/global_cfr_estimates.html.
- G. Hofstede, *Culture's Consequences: International Differences in Work-Related Values* (SAGE Publications Inc., Abridged ed., 1984).
- R. M. Anderson, B. Anderson, R. M. May, *Infectious Diseases of Humans: Dynamics and Control* (OUP Oxford, 1992).

Acknowledgments

Funding: This research received no specific funding from any funding agency. **Author contributions:** All authors developed the study concept and analysis plan. M.K.B. analyzed the data. M.K.B. and S.K. wrote the article, with critical revisions provided by C.E.S., Q.Y., and I.M. All authors approved the article for submission. **Competing interests:** The authors declare that they have no competing interests. **Data and materials availability:** All data and code needed to evaluate the conclusions in the paper are available at https://osf.io/39mfj/?view_only=25e7c10a393b4fad9c131f113de8fc7f.

Submitted 8 April 2020

Accepted 24 June 2020

Published First Release 31 July 2020

Published 5 August 2020

10.1126/sciadv.abc1463

Citation: M. K. Berg, Q. Yu, C. E. Salvador, I. Melani, S. Kitayama, Mandated Bacillus Calmette-Guérin (BCG) vaccination predicts flattened curves for the spread of COVID-19. *Sci. Adv.* **6**, eabc1463 (2020).

Mandated Bacillus Calmette-Guérin (BCG) vaccination predicts flattened curves for the spread of COVID-19

Martha K. Berg, Qinggang Yu, Cristina E. Salvador, Irene Melani and Shinobu Kitayama

Sci Adv 6 (32), eabc1463.

DOI: 10.1126/sciadv.abc1463 originally published online July 31, 2020

ARTICLE TOOLS

<http://advances.sciencemag.org/content/6/32/eabc1463>

SUPPLEMENTARY MATERIALS

<http://advances.sciencemag.org/content/suppl/2020/07/30/sciadv.abc1463.DC1>

REFERENCES

This article cites 16 articles, 1 of which you can access for free
<http://advances.sciencemag.org/content/6/32/eabc1463#BIBL>

PERMISSIONS

<http://www.sciencemag.org/help/reprints-and-permissions>

Use of this article is subject to the [Terms of Service](#)

Science Advances (ISSN 2375-2548) is published by the American Association for the Advancement of Science, 1200 New York Avenue NW, Washington, DC 20005. The title *Science Advances* is a registered trademark of AAAS.

Copyright © 2020 The Authors, some rights reserved; exclusive licensee American Association for the Advancement of Science. No claim to original U.S. Government Works. Distributed under a Creative Commons Attribution NonCommercial License 4.0 (CC BY-NC).